

## Network Video Recorder(NVR) Quick Setup Guide

NO:101-600-0155-01  
Issue:1.0

### Precautions

Fully understand this document before using this device, and strictly observe rules in this document when using this device. If you install this device in public places, provide the tip "You have entered the area of electronic surveillance" in an eye-catching place. Failure to correctly use electrical products may cause fire and severe injuries.

<b>WARNING</b>	It alerts you to moderate dangers which, if not avoided, may cause minor or moderate injuries.
<b>CAUTION</b>	It alerts you to risks. Neglect of these risks may cause device damage, data loss, device performance deterioration, or unpredictable results.
<b>NOTE</b>	It provides additional information.

### **WARNING**

- Strictly observe installation requirements when installing the device. The manufacturer shall not be held responsible for device damage caused by users' non-conformance to these requirements.
- Strictly conform to local electrical safety standards and use power adapters that are marked with the LPS standard when installing and using this device. Otherwise, this device may be damaged.
- Use accessories delivered with this device. The voltage must meet input voltage requirements for this device.
- If this device is installed in places with unsteady voltage, ground this device to discharge high energy such as electrical surges in order to prevent the power supply from burning out.
- When this device is in use, ensure that no water or any liquid flows into the device. If water or liquid unexpectedly flows into the device, immediately power off the device and disconnect all cables (such as power cables and network cables) from this device.
- Do not focus strong light (such as lighted bulbs or sunlight) on

- this device. Otherwise, the service life of the image sensor may be shortened.
- If this device is installed in places where thunder and lightning frequently occur, ground the device nearby to discharge high energy such as thunder strikes in order to prevent device damage.

### **CAUTION**

- Avoid heavy loads, intensive shakes, and soaking to prevent damages during transportation and storage. The warranty does not cover any device damage that is caused during secondary packaging and transportation after the original packaging is taken apart.
- Protect this device from fall-down and intensive strikes, keep the device away from magnetic field interference, and do not install the device in places with shaking surfaces or under shocks.
- Clean the device with a soft dry cloth. For stubborn dirt, dip the cloth into slight neutral cleanser, gently wipe the dirt with the cloth, and then dry the device.
- Do not jam the ventilation opening. Follow the installation instructions provided in this document when installing the device.
- Keep the device away from heat sources such as radiators, electric heaters, or other heat equipment.
- Keep the device away from moist, dusty, extremely hot or cold places, or places with strong electric radiation.
- If the device is installed outdoors, take insect- and moisture-proof measures to avoid circuit board corrosion that can affect monitoring.
- Remove the power plug if the device is idle for a long time.

### Special Announcement

- All complete products sold by the manufacturer are delivered along with nameplates, quick setup guide and accessories after strict inspection. The manufacturer shall not be held responsible for counterfeit products.
- The manufacturer will update this manual according to product function enhancement or changes and regularly update the software and hardware described in this manual. Update information will be added to new versions of this manual without prior notice.
- This manual may contain misprints, technology information that is not accurate enough, or product function and operation description that is slightly inconsistent with the actual product, the final interpretation of company is as a standard.
- This manual is only for reference and does not ensure that the information is totally consistent with the actual product. For consistency, see the actual product.

### **NOTE**

For more information, please refer to CD and website.

## 1 Open Package Examination

Open the package, check the appearance of product for no obvious damage, and confirm the item list for table 1-1 is consistent.

**Table 1-1** Packing list

Component	Quantity	Remark
Network Video Recorder	1	
Quick Setup Guide	1	
CD-ROM	1	
Mouse	1	
Power adapter	1	Optional
Power cord	1	
Silicone cushion	8	
Phillips head screw	12	
Terminal block	2	Optional

## 2 Device Structure

### 2.1 Device Ports

#### **NOTE**

Different device may have different ports and multi-head cable, please refer to the actual product.

Front panel description of device, please refer to table 2-1.

**Table 2-1** Front panel description

Port Name	Description
PWR Indicator	When the NVR is operating, the PWR indicator is steady on. When the NVR is shut down, the PWR indicator is turned off.
HDD Indicator	Hard disk status indicator This indicator flashes when data is transmitted.
PoE Indicator	PoE network status indicator This indicator flashes when data is transmitted.
KB/MOUSE	Supports connection to a USB mouse and keyboard.
BACKUP	Supports connection to a USB flash drive or USB removable hard disk.

Rear panel description of device, please refer to table 2-2.

**Table 2-2** Rear panel description

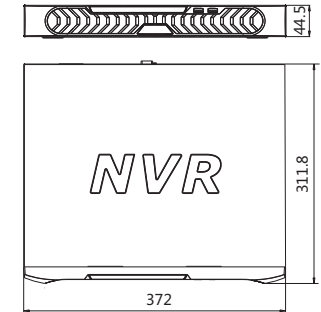
Port Name	Description
	Safe ground screw of the device
PoE	PoE network interfaces
LAN	RJ45 10/100/1000 Mbps adaptive Ethernet interface.
RESET	Factory reset button
LINE OUT/ LINE IN	Audio output and audio input
VGA	Video output interface
HDMI	
	Alarm input and alarm output
	110 V/220 V AC power input interface of the device
	Connected to an external power adapter

## 2.2 Device Dimensions

#### **NOTE**

Different device may have different dimensions, please refer to the actual product.

**Figure 2-1** Dimensions (Unit:mm)

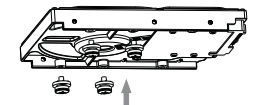


## 3 Device Installation

The hard disk of the NVR must be provided by the user. Take the following steps to install hard disks :

- Remove the screws for fixing the cover and take down the cover.
- Take out the screws and silicone cushion, route the screws through the silicone cushion, and install it to the screw holes, as shown in figure 3-1.

**Figure 3-1** Installing the hard disk screws

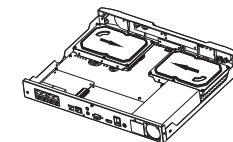


#### **NOTE**

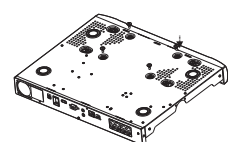
- During the installation, ensure that the large disc of the silicon cushion close to the hard disk screw holes.
- Please install the hard disk fixing screws on the screw holes far away from the power supply interface.

- Route the screws through the holes on the base, push the hard disk to the appropriate position on the left, as shown in figure 3-2.
- Turn the device over, and fasten the rest two hard disk fixing screws, as shown in figure 3-3.

**Figure3-2** Installing hard disk



**Figure3-3** Fixing hard disk



- Install other hard disks following step 2, step 3 and step 4, and insert the hard disk data cable and power cable, then put on the upper cover and fasten the fixing screws.

## 4 Quick Configuration(e.g IE)

### 4.1 Startup

Before starting NVR, ensure that the NVR is connected to a power supply properly and a monitor is connected to the HDMI or VGA interface of the NVR correctly. NVR will automatically power-on. When it is connected to a power supply,

**CAUTION** In some environments, if the power supply is abnormal, the NVR may not work properly. In severe cases, the NVR may be damaged. In these environments, you are advised to use regulated power supply.

When the NVR is started, the power indicator becomes steady on and the NVR starts a self-test and displays the test result on the screen. The startup process takes about 2 minutes.

When a hardware abnormality is detected, the self-test screen stays on. You can click continue or shutdown in the lower right corner of the screen. If you click continue, the NVR enters the login screen.

#### NOTE

- Hard disk detection is performed during startup. If the detection fails, possible causes include :
- The hard disk is new and unformatted. In this case, format the hard disk based on "Quick Setup".
  - The hard disk is formatted, but the file system is inconsistent with the one supported by the NVR.
  - The hard disk is damaged.

Figure 4-1 Login



#### NOTE

The default user name is **admin**. The default password is **admin**. Change the password when you log in the system for first time to ensure system security.

You can change the system display language on the login page.

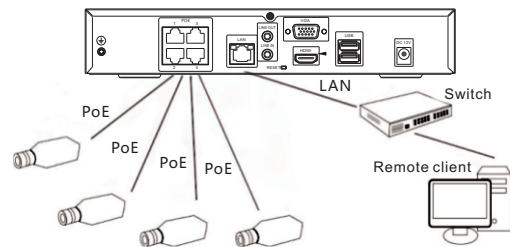
Enter the correct user name and password. The main screen of the NVR is displayed.

### 4.2 Adding Webcams

#### 4.2.1 PoE

After the PoE network interfaces are connected to IP cameras, the NVR automatically adds the IP cameras. Figure 4-2 shows the network topology of the NVR (e.g 2 Disks, 4 PoEs).

Figure 4-2 Network topology of the NVR

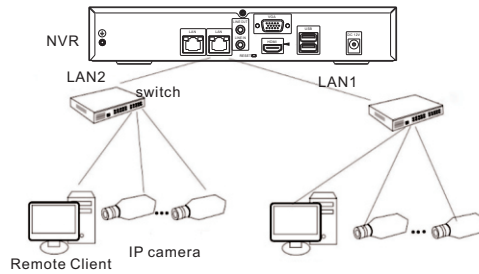


#### 4.2.2 Non-PoE

A free network includes other network devices in addition to IP cameras and NVR. The topology of a free network can be organized freely so long as NVR and IP cameras can communicate with each other smoothly.

When a free network is used, the user needs to manually search for and add IP cameras. For details, see chapter 5.1 "Quick Setup".

Figure 4-3 Topology of a free network



## 5 Quick Configuration(e.g IE)

The NVR is embedded with a web server and supports mainstream browsers such as Internet Explorer, Chrome, Firefox, and Safari. Operations such as quick setup, real-time preview, video playback, alarm search, NVR setup, and camera setup can be performed through the web.

Open the Internet Explorer, enter the IP address of IP camera (default value: 192.168.0.121) in the address box, and press Enter. The login page is displayed, as shown in figure 4-1.

### 5.1 Quick Setup

Quick setup provide NVR network configuration, disk management, time setting, IP camera search, video configuration, camera network configuration, stream configuration, and mobile detection configuration, as shown in figure 5-1.

#### 5.1.1 NVR Setup

- NVR basic information: You can set the device name and device time of the NVR.
- Sync Camera Time: It can be done manually or automatically.
- If the manual mode is selected, click [ ] to synchronize the time of IP cameras. If the auto mode is selected, the NVR synchronizes the time of IP cameras automatically.
- Authentication Accounts: To log in to an IP camera, you need to

enter the correct authentication account. Only successfully authenticated IP cameras can be managed. Double-click the user name and password text field to modify the user name and password.

- NVR network configuration: You can enable automatic IP address acquisition and set the IP address, subnet mask, default gateway, DNS address of the NVR, and display the network connection status and speed.
- Hard disk management: You can manage the hard disk of the NVR as follows: Format the hard disk; Check the status of the hard disk (usable, abnormal, unformatted, and unavailable); Check the used space and total space of the hard disk.

- Formatting will clear all video data on the hard disk. Use this function only when necessary.
- Be sure to uninstall the hard disk before removing it from the NVR during runtime; otherwise, the hard disk may be damaged or data may be lost.
- The NVR must be connected to a stable power supply during runtime; otherwise, the hard disk may be damaged or data may be lost.

#### CAUTION

### 5.1.2 Camera setup

#### Camera search and deletion

When you need to search camera for management, click **Search Camera**, the Camera Search page is displayed, then click **Scan**, it will scan for the camera automatically, as shown in figure 4-1. Click [ ], the camera selecting page is displayed, Select the cameras you want and click [ ] , then click **Ok** to complete selection of IP cameras.

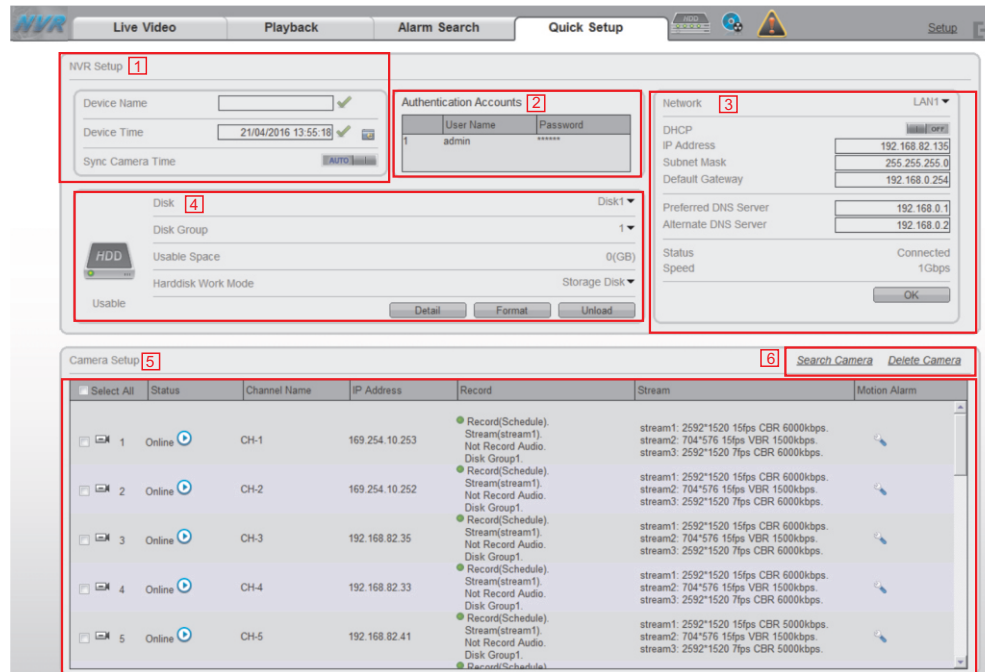
To remove managed cameras, check the cameras in the camera list and click [ ] to delete cameras.

#### IP camera setup

You can view the status of an IP camera and set the name, IP address, record policy, stream parameter, and motion alarm parameter of the IP camera.

- View the status of an IP camera: The camera status may be Online, Offline, and Incorrect account. For an online IP camera, click [ ] to view live video.
- Change the channel name: Click a selected channel name, enter a channel name in the Name text field.
- Set a record policy: Click a selected record, the Record Policy Configuration page is displayed. For how to set a record policy, see the Record of Network Video Recorder (NVR) User Guide.

Figure 5-1 Quick Setup



- Set a stream: Click a selected stream, the Stream page is displayed, Set stream parameters, select On for Apply to all the same devices, and click OK. The parameter settings are applied to all IP cameras that have the same resolution as the configured resolution.
- Set a motion alarm: Click the motion alarm information, the Motion Alarm page is displayed. Set the schedule and motion area when the motion detection alarm function is enabled.

### 5.2 Live video

To browse a real-time video, click Live Video. The Live Video page is displayed, as shown in figure 5-2.

Figure 5-2 Live Video



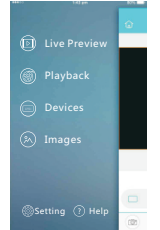
## 6 Mobile phone client

Mobile phone client supports IOS, Android system, search "Inview Pro" or "Inview Lite" in the App store and install it.

Click icon [ ], the main menu is displayed, as shown in figure 6-1. You can perform the following operation:

- Live preview
- Playback
- Device Manage
- Image

Figure 6-1 Main menu



## 5 Appendix : Hazardous Substance Declaration

Component	Hazardous Substance or Element					
	Pb (Pb)	Hg (Hg)	Cd (Cd)	Hexavalent Chromium (Cr6+)	Polybrominated Biphenyls (PBB)	Polybrominated Diphenyl Ethers (PBDE)
Structural part	x	o	o	o	o	o
Board/circuit module	x	o	o	o	o	o
Cable connector	x	o	o	o	o	o
Accessories	x	o	o	o	o	o

#### NOTE

o : indicates that the concentration of the hazardous substance in all homogeneous substances of the component is within the limit specified in SJ/T 11363-2006 Requirements for Concentration Limits for Certain Hazardous Substances in Electronic Information Products.

x : indicates that the concentration of the hazardous substance in at least one homogeneous substance of the component exceeds the limit specified in SJ/T 11363-2006 Requirements for Concentration Limits for Certain Hazardous Substances in Electronic Information Products.